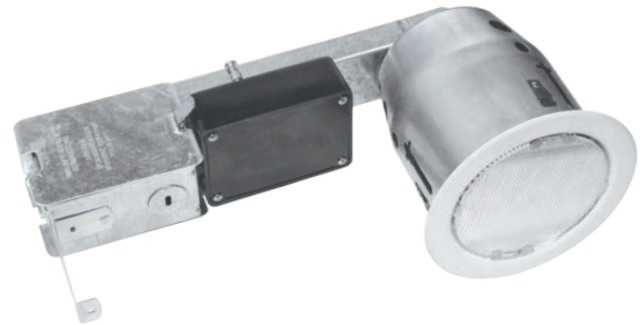


**NIGHTFALL SERIES**

**LED RECESSED CAN EMERGENCY LIGHT WITH SECURITY/NIGHT LIGHT  
DRYWALL & SOFFIT MOUNT CAPABLE**

**FEATURES**

- 50-55 foot on center spacing
- Compact, flush-mount, 4" recessed down light for remodel applications
- 10 or 15 watt Luxeon LED options
- Pure white light output at 5600K
- Optical LED lens coupled with a prismatic polycarbonate lens for optimal light output and protection
- Maintenance-free NiMH battery
- Optional PathSafe security/night lighting (SEC) allows the fixture to be used as an emergency lighting and security /night lighting fixture
- Optional Guardian (G2) self-testing/self-diagnostics available
- Optional damp rating (DR) available
- Standard finish: White
- External LED status indicator and test button
- 120-277 volt, 50/60Hz input
- Made in U.S.A.



Optimized high performance LEDs make this architectural downlight an ideal choice for indoor installation in long corridors and open spaces. With 55 ft spacing in 9 ft ceilings, this is a prime choice for exceptional light output without affecting the appearance of the ceiling layout in any remodel application.

**WARRANTY**

Any component that fails due to manufacturers defect is guaranteed for 5 years with a separate 5 year pro-rated warranty on the battery. The warranty does not cover physical damage, abuse or acts of God. Manufacturer reserves the right to charge for such repairs if deemed necessary.



SPECIFICATIONS ARE SUBJECT  
TO CHANGE WITHOUT NOTICE

**ORDERING INFORMATION Example: NFDL2-WB-15L-WH-DR**

Series	Power Source	LED Wattage	Finish	Options (Factory Installed)
NFDL2	WB = With Battery	10L = (2) 5 Watt LEDs 15L = (3) 5 Watt LEDs	WH = White	G2 = Self Test / Self Diagnostics SEC = Security Lighting/Night Lighting - 2 Watts per LED DR = Damp Rated

## CONSTRUCTION

Remodel Housing: The Nightfall Downlights offer a 4" trim ring with standard galvanized steel can and back plate on a remodel platform designed for remodel and retrofit applications. Heat and impact resistant polycarbonate prismatic lens resists discoloration. Non-IC Rated.

## ILLUMINATION

Fixtures are supplied with high powered Luxeon LEDs offering 10 watts or 15 watts of light output with a pure white color temperature of 5600K. Optical lenses on the LED module combined with the prismatic polycarbonate lens produce an optimized elongated pattern of light throughout the path of egress. The high-performance LEDs have an expected life over 50,000 hours with normal life.

Lamps are connected in parallel – if one lamp fails, the balance of the lamps will continue to operate.

## ELECTRICAL

### Input

120- 277 volt, 50/60Hz.

### Nickel Metal Hydride Battery – NiMH (Standard)

Extronix nickel metal hydride batteries are maintenance-free with a life expectancy of 15 years. NiMH batteries perform optimally in temperatures ranging from 0-40 degrees C.

### Emergency

The Nightfall Downlight will operate for a minimum of 90 minutes during a loss of power with a 24 hour minimum recharge time for the battery. The power supply delivers a regulated current and voltage to LED lamps to optimize lamp life. A momentary test switch and LED charge indicator are included.

### Brownout Circuit

The brownout circuit monitors the flow of AC current to the unit and triggers the emergency lighting system once a set reduction of AC power occurs. This dip in the voltage will cause many fixtures to extinguish causing loss of normal lighting even though a total power failure has not occurred.

### Low Voltage Disconnect

When the battery's terminal voltage falls below predetermined levels, the low-voltage circuit disconnects the emergency lighting load. The disconnect remains in effect until normal power is restored, preventing deep battery discharge and improving the life of the battery. The disconnect will also automatically reconnect the load circuit once the battery voltage returns to a normal value after charging.

### Solid-State Transfer

The unit features a solid-state switching transistor which eliminates damaged contacts or mechanical failures associated with relays. The switching circuit is designed to detect a loss of AC power and automatically energizes the lamps. Upon restoration of the AC voltage, the emergency lamps will switch off and the charger will automatically recharge the battery.

### Overload and Short-Circuit Protection

The solid-state overload monitoring system in the DC circuit disconnects the lamp load from the battery should excessive wattage demands be made and automatically resets when the overload or short-circuit is removed. This overload current protective characteristic eliminates the need for fuses or circuit breakers for the DC load.

## INSTALLATION

This Nightfall emergency unit is installed as a recessed housing with trim for remodel applications.

### MADE IN THE USA

Made in the U.S.A. and is in full compliance with the American Recovery and Reinvestment Act of 2009 (ARRA) requirements and Buy American provisions.

### DAMP LOCATION RATED (Option: DR)

Damp location rating ensures the fixture is designed to operate safely in outdoor locations that are protected from the direct elements. Damp location rated fixtures may be installed indoors. Products with damp location ratings are not designed to withstand constant or significant moisture or direct contact with water or steam.

## GUARDIAN SELF-TEST/SELF-DIAGNOSTICS (Option: G2)

The Guardian circuit continuously monitors the operating condition of the AC power, battery supply voltage, emergency lamp continuity and charging circuit.

The purpose of this option is to provide visual signaling in response to a possible fault. If a failure is detected, visual status will occur immediately via the CHARGER LED and/or the BATTERY FAULT LED. The LEDs will stay illuminated until the fault is corrected.

The Guardian circuit also monitors the transfer circuit and performs automatic code compliant testing. The Guardian circuit will perform a 30 second discharge and self-test every 28-30 days. A 90 minute discharge and self-test is performed every 6 months.

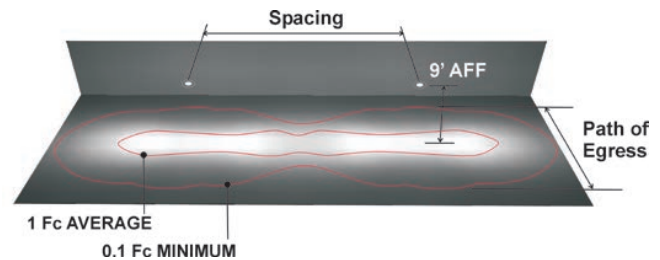
## PATHSAFE SECURITY LIGHTING/NIGHT LIGHT (Option: SEC)

The PathSafe option allows the fixture to be used both as an emergency lighting fixture and security / night lighting fixture. Models with battery back-up and the PathSafe option will operate each LED at 2 watts (SEC option) offering 50% output when in security lighting mode when connected to the active building AC supply and wired according to the installation instructions. The security lighting circuit is independent of emergency lighting and may be switched manually by exterior photocell (supplied by others) or other automatic means.

## CONFORMANCE TO CODES & STANDARDS

The Nightfall Downlight Series is ETL listed and meets or exceeds the following: UL 924, NEC requirements and NFPA 101.

## SPACING GUIDES



LED	Mtg. Ht.	Spacing		
		Path of Egress Width		
		3 Ft.	6 Ft.	10 Ft.
10L	9'	50'	40'	25'
15L	9'	55'	50'	40'

Spacing guidelines are designed to achieve a 1 foot-candle average and a 0.1 foot-candle minimum with a 40:1 or less max/min ratio. Guidelines are intended to be used as a design aid and are not a guarantee of code compliance. Manufacturer assumes no responsibility for local requirements or specific project variables.

## DIMENSIONS

